

# STANDARD TABLE EDGE PROFILES



## Edge Profile Category - A



SE1 - Self Edge  
1 1/4" thick



TMFL1 - T-Mold Flat  
1 1/4" thick

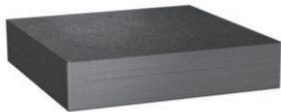


TMCR1 - T-Mold Crown  
1 1/4" thick



3MFL1 - 3 mm Flat PVC  
1 1/4" thick

## Edge Profile Category - B



WNFL1 - Wood Internal Flat Edge  
1/2" wide x 1 1/4" thick



WNCR1 - Wood Internal Crown Edge  
1/2" wide x 1 1/4" thick



WNBV1 - Wood Internal Bevel Top Edge  
1/2" wide x 1 1/4" thick



WXFL1 - Wood 1/2" Wide External  
Flat Edge - 1/2" wide x 1 1/4" thick

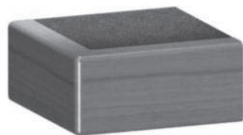


WXBD1 - Wood 1/2" Wide External  
Beaded Edge - 1/2" wide x 1 1/4" thick

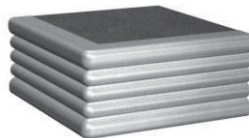


WXR1 - Wood 1/2" Wide External  
Radius Top Edge - 1/2" wide x 1 1/4" thick

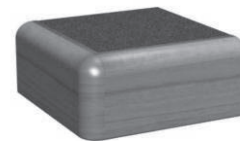
## Edge Profile Category - C



WXFL2 - Wood External Flat Edge  
1/2" wide x 1 3/4" thick



WXBD2 - Wood External Beaded Edge  
1/2" wide x 1 3/4" thick

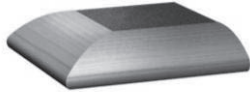


WXR2 - Wood External Radius Top Edge  
1/2" wide x 1 3/4" thick

**STANDARD TABLE EDGE PROFILES**



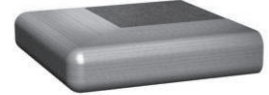
**Edge Profile Category - D**



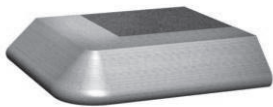
WKNF1 - Wood Knife Edge  
2" wide x 1 1/4" thick



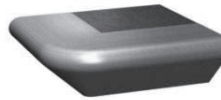
WBNS1 - Wood Bullnose Edge  
2" wide x 1 1/4" thick



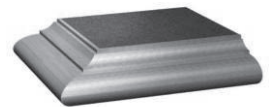
WDRD1 - Wood Double Radius  
2" wide x 1 1/4" thick



WBEV1 - Wood Bevel Edge  
2" wide x 1 1/4" thick

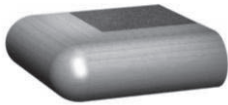


WRBV1 - Wood Reverse Bevel  
2" wide x 1 1/4" thick



WTRD1 - Wood Traditional  
2" wide x 1 1/4" thick

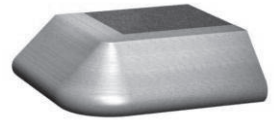
**Edge Profile Category - E**



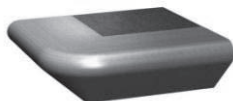
WBNS2 - Wood Bullnose  
2" wide x 1 3/4" thick



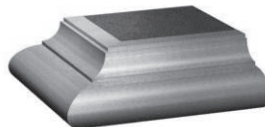
WDRD2 - Wood Double Radius  
2" wide x 1 3/4" thick



WBEV2 - Wood Bevel  
2" wide x 1 3/4" thick



WRBV2 - Wood Reverse Bevel  
2" wide x 1 3/4" thick



WTRD2 - Wood Traditional Edge  
2" wide x 1 3/4" thick

**Edge Profile Category - F**



WTRD1AP - Wood Traditional Edge 2" Wide  
With Wood Apron - 3" high

**Special Order**

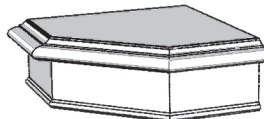


SE2 - Self Edge 1 3/4" Thick

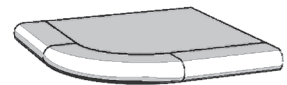


WNRD1 - Wood Internal Radius top Edge

**Corner Options**



8" Chamfered Corner



8" Radiused Corner

*Upcharge of 10% at list will be charged for either option*